



PRE-NURSING FOUNDATIONS

Summer 2025

RESOURCES FOR SUCCESS



ACADEMIC **SUCCESS**

ACADEMIC ADVISING STUDENT SUCCESS COACH

Your Student Success Coach provides personalized support throughout your time at CBU, helping with:



Success
Strategies



Class
Registration



Degree
Planning



Appeals/Petition
Requests



Schedule
Assistance

Connect with your SSC through:

- Email, Phone, Events, & Appointments and Walk-ins





YOUR PROFESSORS ARE HERE TO HELP

Your Success Matters

Your professors care about your success at CBU and are willing to meet with you.

Experiencing Challenges

If you are experiencing challenges with a course, it is important to have a conversation with your professor so they can help you get back on track.

Reaching Out

- Before and After class
- Office Hours (will be established on the first day of class and indicated on syllabi)
- Email

WHAT CAN YOU DISCUSS DURING OFFICE HOURS?

- Clarification on Course Material
- Assignment Feedback
- Exam Preparation
- Career Advice
- Research Interests
- Personal Issues Impacting Studies
- Future Course Selection
- Academic Goals
- Professional Development



START STRONG: REVIEWING YOUR SYLLABI

- Understanding Course Expectations
- Track of Important Dates
- Knowing Required Materials
- Grading Breakdown
- Policies on Late Work and Academic Integrity
- Opportunities for Extra Help/Office Hours
- Planning Your Semester
- Building a Good Relationship with your Professors



LIBRARY

Research and information needs

- Databases
 - Academic Journals
 - Books
 - Research databases
- Group Study Rooms (reservable)
 - White board
 - TV (screen-sharing capability)
- Interlibrary Loan Service
 - Allows you to borrow books, journal articles, and other materials from nationwide network of libraries
- Inland Empire Academic Libraries Cooperative
 - Borrowing from other libraries (Riverside, LA, & San Bernardino Counties)
- Computers
- Print Station



LOOKING FOR A SPACE TO STUDY?



Quiet Spaces

- Office of Student Success | University Tutoring Center
- Annie Gabriel Library
- Gordon and Jill Bourns College of Engineering
- Hae and Shina Park Building – School of Business

Cafe Style

- The Palm
- Wanda's
- The Lounge
- Foodology



The Lounge



OFFICE OF STUDENT SUCCESS

HSI Grant Programs



Disability Services Center



Veterans Resource Center



University Writing Center



University Tutoring Center



HSI GRANT PROGRAMS

Programs

- Pre-Nursing Foundations
- Lancer Connect Peer Mentoring Program
- Faculty and Staff Professional Development
- Community Outreach

Academic Support

- Anatomical Models
- Laptop Kiosk
- Lab Assistants



Left to right: Michelle, Lizette, and Heidi.

UNIVERSITY TUTORING CENTER

Services

- One-on-One Tutoring
- Group Tutoring and Supplemental Instruction
- Peer Financial Coaching
- Peer Mentoring
- Make-Up Exam Proctoring
- Laptop Kiosk
- Anatomical Models
- Printing Station



Workshops

- Time Management, Study Skills, and Procrastination
- Tutorial Videos for: A&P, Stats, Math, and Chemistry

Dr. Michael Osadchuk
Director of University Tutoring Center
Phone: (951) 343-4775
Email: mosadchuk@calbaptist.edu

UNIVERSITY WRITING CENTER

Grammarly – Free premium accounts for all CBU students

Schedule

- Online
- In-person
- Email Writing Appointments

Tutorials

- Style guides (MLA, APA, AMA, and Chicago)
- Academic and Research writing



Contact the Writing Center

Email: writing@calbaptist.edu

Phone: (951) 343-4349

Hours:

Monday to Thursday, 9:00 am - 10:00 pm

Friday, 9 am - 5 pm

Saturday-Sunday, Closed

Lancer Arms 54
8432 Magnolia Avenue
Riverside, CA 92504



DISABILITY SERVICES CENTER

(Medical & Psychiatric)



Services

- Academic Skills Coaching: encourage students to explore new strategies and work on developing habits that promote academic success

Academic Accommodations

- Individualized, based on the learning needs of each student with documented disabilities.
 - Examples: American Sign Language Interpreting, Communication Access Realtime Translation/Captioning, Notetaking Support, Alternative Text, Extended Testing Time, Housing Accommodations...



Zakiya Glasco

Director of Disability Services

Phone: (951) 552-8814

Email: zglasco@calbaptist.edu

VETERANS RESOURCE CENTER

- Cultivate a community where student veterans:
 - Succeed academically
 - Find a supportive network that understands their unique experiences
- Aim to create an environment where veterans can thrive both personally and academically, enhancing their overall university experience
- Provide Resources to meet the Veteran's needs
- For more information contact the Veterans Resource Center



Jay Villasenor

Director del Veterans Resource Center

Phone: (951) 552-8522

Email: jvillasenor@calbaptist.edu



FINANCIAL **PREPARATION**

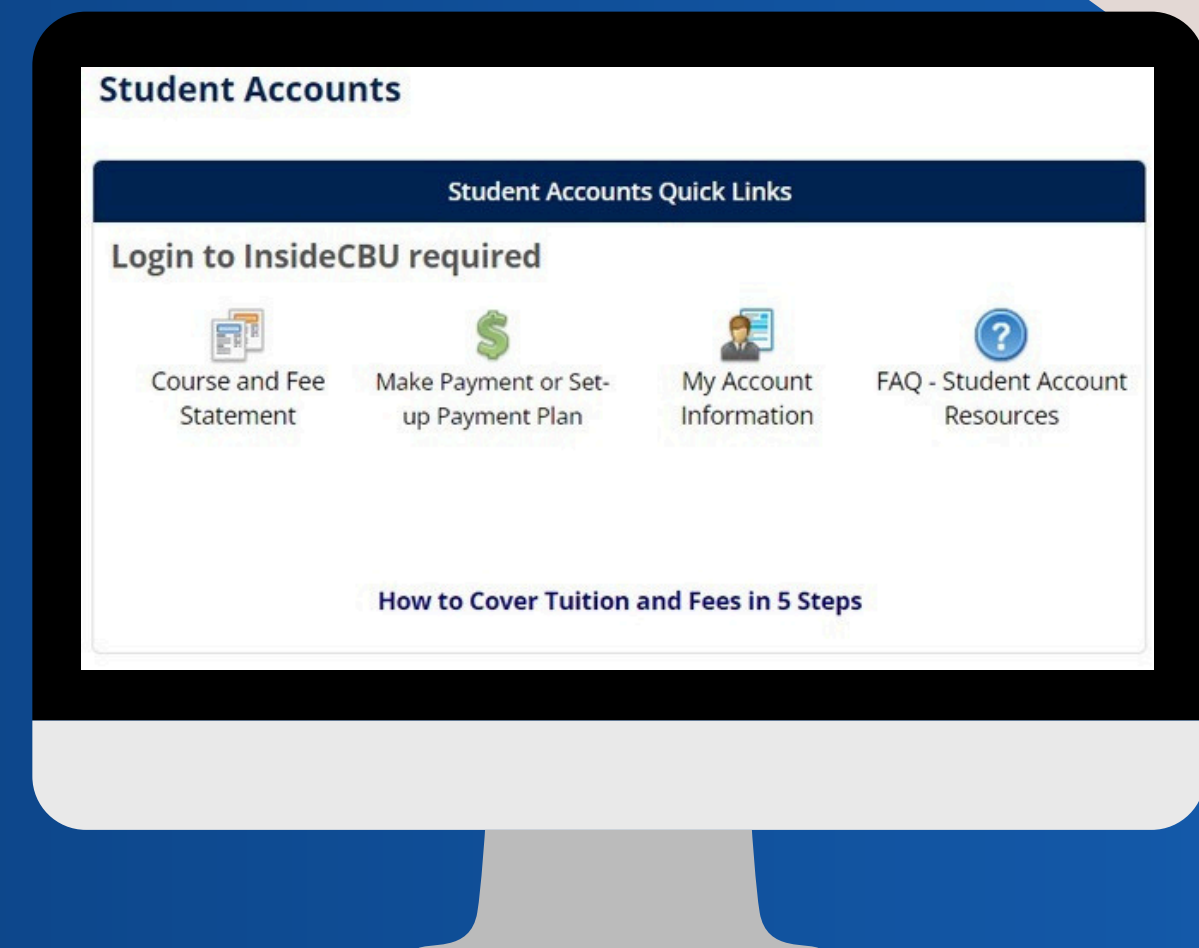
STUDENT ACCOUNTS

The Student Accounts Office is responsible for:

- Student Billing and Collections
- Tuition & Fee Charges
- Balance Due
- Payment Due Dates
- Payment Options
- Book Vouchers
- Student Refunds



Payment Due Date
August 13, 2025



FINANCIAL AID

Applications

- Free Application for Federal Student Aid (FAFSA)
- CA Dream Act Application (CADAA)
- Veterans Benefits

Scholarships

- Free money that you do not have to pay back.
- Check out CBU's Private Scholarship Engine:
 - **Scholarship Universe:** In-house search engine that matches students to scholarships.

Grants

- Free money that you do not have to pay back.
- Grants are need-based aid and eligibility is based on financial need as determined by the FAFSA.
- Some grants are funded by CBU in the form of institutional aid, while others are government funded.



LOANS

Federal Loans

Direct Subsidized: for students who demonstrate financial need, as determined by the FAFSA. No interest is charged while a student is in school at least half-time, during the grace period, and during deferment periods.

Direct Unsubsidized: not based on financial need; interest is charged during all periods, even during the time a student is in school and during grace and deferment periods.

- Fixed Interest Rate: 6.53%
- Loan Fee: 1.057%

Private Loans

Are available to students who do not qualify for Federal Loans but need additional aid.

- They are based on creditworthiness.
- Most students will need a creditworthy co-signer such as a parent or other relative to obtain a private education loan.

%





GETTING INVOLVED **ON CAMPUS**

Community Life

New Student Programs

- Welcome Weekend
- First-Year Experience (FYE)

Cultural Celebrations

- Asian American Pacific Islander Celebration
- Black History Celebration
- Hispanic Heritage Month Celebration

Campus Traditions

- Midnight Madness
- Fortuna Bowl
- Merry & Bright
- Yule
- Lancer Takeover

Discounted Tickets to Theme Parks

- Disneyland, Knott's Berry Farm, Universal Studios Hollywood...



Clubs and Organizations

Cultural Clubs

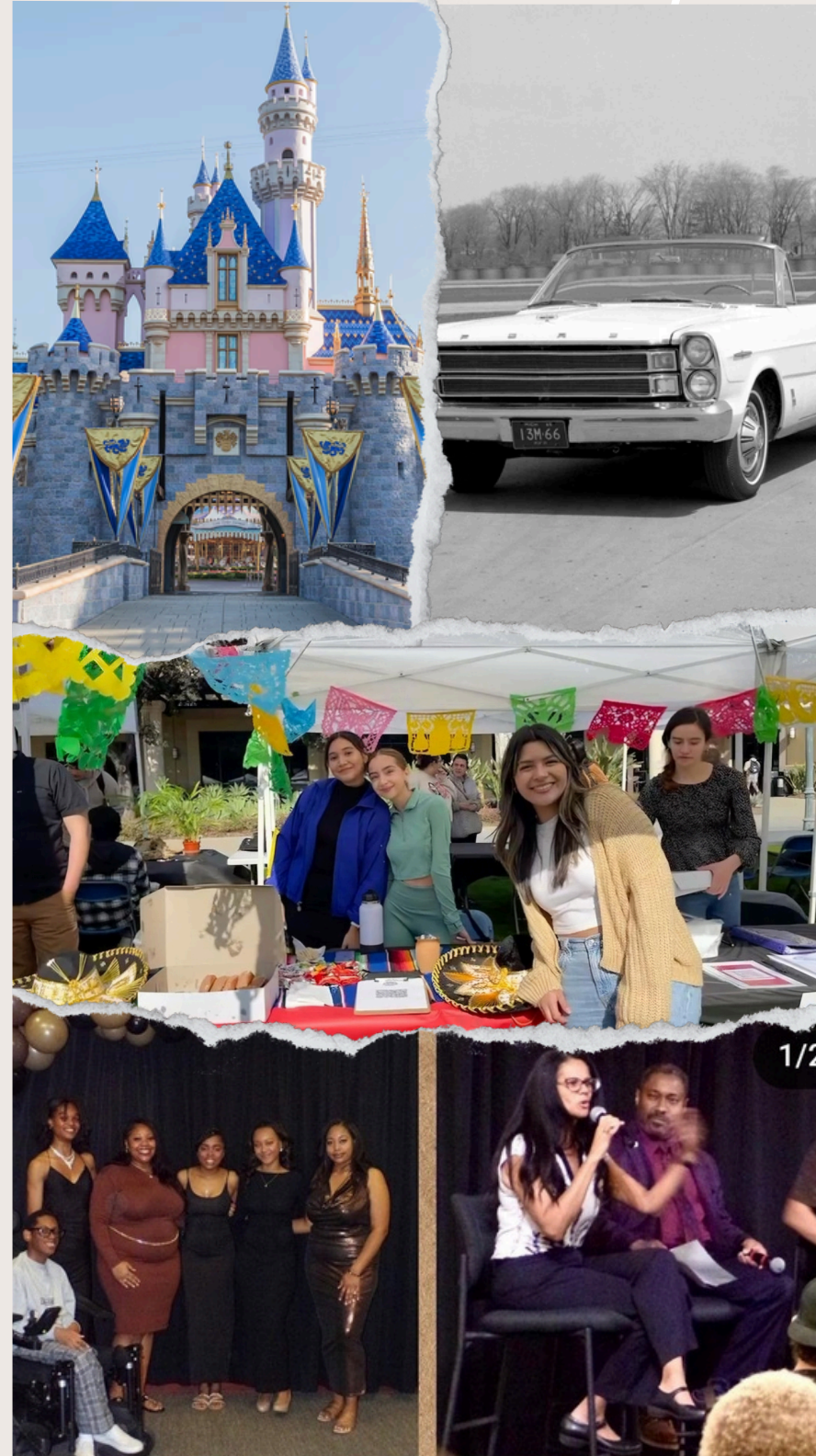
- Latino Student Union (LSU)
- Black Student Union (BSU)
- Asian and Pacific Islander Club (API)
- Indigenous Student Club

Healthcare Clubs

- Students of Nursing Association (SONA)
- Red Cross Club
- Nutrition Club

Special Interest Clubs

- Culture and Community Club
- Disney Club
- Art Club
- Cars and Coffee



Get
Involved



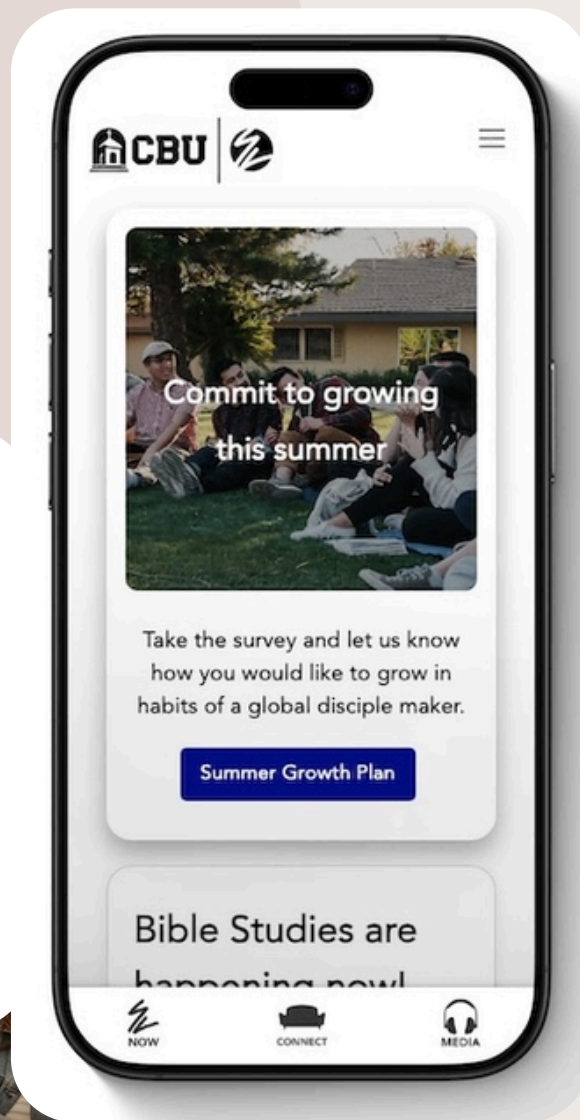


Culture and Community Club



Student of Nursing Association (SONA)





Spiritual Life

SL Night

- Weekly gathering celebrating discipleship across campus. Join us Wednesdays at 8pm to grow spiritually, connect, and be encouraged through God's Word.

Bible Studies

- Meet during the Fall and Spring semesters. No RSVP is necessary, all you have to do is show up!

Other Resources:



Global Service



Local Service



Prayer Requests

Commuter Programs

The Commuter Lounge is a home-away-from-home for commuter students.

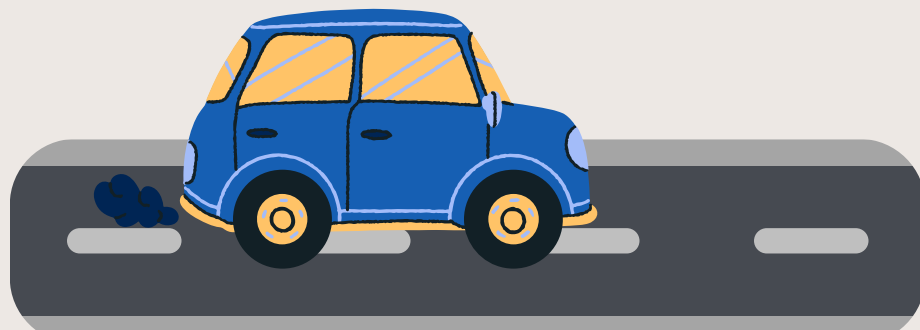
- Kitchen, refrigerator, microwaves, printer and study areas

Commuter Programs

- Commuter Café: The purpose of the Commuter Café is for commuter students to grab a quick snack on Chapel Day and connect with other commuters
- Commuter Christmas: Join other commuters for this special Christmas celebration. Hang out, enjoy some free food and Christmas-themed activities.

Commuter Connect

- Monthly email newsletter with upcoming campus events



Residence Life

- They hold events for residents throughout the semester
- Support from RA
 - Serve as a resource for personal issues and co-curricular opportunities
- Living/Learning Community: Contributes to the personal and academic success of residents





NAVIGATING YOUR **CAREER PATH**

Career Center

Services offered:

- Handshake: Career opportunities and communicating with employers
- Resume, Cover Letter, LinkedIn Reviews, & Mock Interviews
- 4-Year Roadmaps
- Classroom Presentations
- Career Fairs & Networking Events
- Major, Internship, & Career Guidance
- Forage: bite-sized 5-6 hour virtual work experience
- International Student Resources

Wardrobe Closet



LinkedIn

FREE HEADSHOTS



MENTAL HEALTH & **WELLNESS**

Student Mental Health



On-Campus Resources

Email: mentalhealth@calbaptist.edu

- Student Care
- CBU Counseling Center

Community Resources

Student Mental
Health staff help
connect students to
community resources

Crisis
Support



Counseling Center

Schedule an Appointment with a Counselor

Additional Resources

- Informational Resources
 - Anxiety, Sleep Hygiene, Depression...
- Mental Health Screening
- Mind and Body Resources
- Relaxation Resources
- Mental Health Apps
 - WellTrack Boost App: A free self-help app for CBU students, offering tools to understand and manage feelings of stress, anxiety, or depression.
- Ted Talks on Mental Health



welltrack



Student Care

Student Care acts as a bridge between students and the wider CBU community, coordinating on- and off-campus resources for students and working to ensure that each student feels seen and supported.

Examples

- Unexpected life events
- Personal crises
- Extended illness or injury
- Hospitalization
- Loss of loved one
- Mental health challenges...
- Location: Student Support Suite in Lancer Plaza



On-Campus



Off-Campus

RESOURCES



The Student Care staff is also available to assist Students who are experiencing significant (physical and mental) health challenges that may prevent the successful completion of classes.

Recreation Center



Amenities

- Basketball courts, racquetball courts, cardio equipment...
- Outdoor field and track
- Golf simulator
- Certification courses
- Personal/group training



Outdoor Adventures

- Overnight trips: everything is planned
- Day trips: explore SoCal (hiking, surfing, kayaking...)
- Assist students with planning their own outdoor trip
- Discounts on gear rentals



Intramurals

- Leagues:
 - Non-Competitive
 - Championship
 - Rec It Fridays
 - One Day Tournaments





SAFETY @ CBU

Safety Services

Provide a safe and friendly environment that supports student success. Safety Services assists with the protection of students, employees and property.



Request a Vehicle Permit

- Can register up to 2 vehicles
- Free parking for CBU students
- Can register for parking after registering for classes

LiveSafe Features

- Request help
- CBU Safety Escort and SafeWalk
- Campus Map
- Share information with Safety Services





Classroom

Commencement

Calling



CLASSROOM, COMMENCEMENT, CALLING

Tips for Success



- Using a planner/digital calendar
 - Example: Outlook Calendar
 - Establish a routine
 - Practice time management & study skills
- Use campus resources early
- Join student organizations
- Understand Pre-Nursing Requirements and Nursing Application Requirements
- Seek volunteer experience
- Take care of your wellbeing

HSI GRANT PROGRAMS TEAM



Heidi Rodríguez

HSI Grant Coordinator



Lizette León

HSI Grant Director



Michelle Pérez

HSI Grant Coordinator



Hailey Cortez

HSI Student Worker

Contact Us: HSIGrantPrograms@calbaptist.edu